

Everchem DINCH

Description

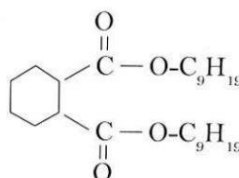
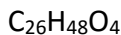
DINCH (1,2-Cyclohexane Dicarboxylic Acid, di-Isononyl Ester) is produced by esterifying Isononanol and Cyclohexane-1, 2-dicarboxylic anhydride. It is a non-phthalate plasticizer. DINCH has low migration and is suitable for sensitive applications, particularly food wrapping, lids, toys, medical devices, and plastic inflatable products.

Properties Specifications

Color	APHA	25 MAX
Acid Value	mgKOH/g	0.05 MAX
Ester Content	Wt %	99.50 MIN
Heating Loss	Wt %	0.10 MAX
Specific Gravity	@ 20°C	0.950±0.005
Refractive Index	@ 20°C	1.461±0.003
Water Content	Wt %	0.005 MAX
Phthalate Content	Wt %	0.01 MAX

Physical Properties

Molecular Formula
Structural Formula



Molecular Weight	g/mole	425
Boiling Point	°C	224
Flash Point	°C	240-250
Viscosity	cPs	47
Freezing Point	°C	-54

The information in this Technical Data Sheet is believed to be accurate but is made without warranty. The values listed are typical properties for the material and should not be considered product specifications. Everchem Specialty Chemicals disclaims any liability in connection with the use of this information, and does not warranty against infringement by reason of the use of any of its products in combination with other materials or in any process.

☀ INNOVATIVE SOLUTIONS FOR THE CHEMICAL INDUSTRY ☀



1400 N. Providence Road, Media, PA 19063
Tel: 484-234-5030 Fax: 484-234-5037
www.everchem.com